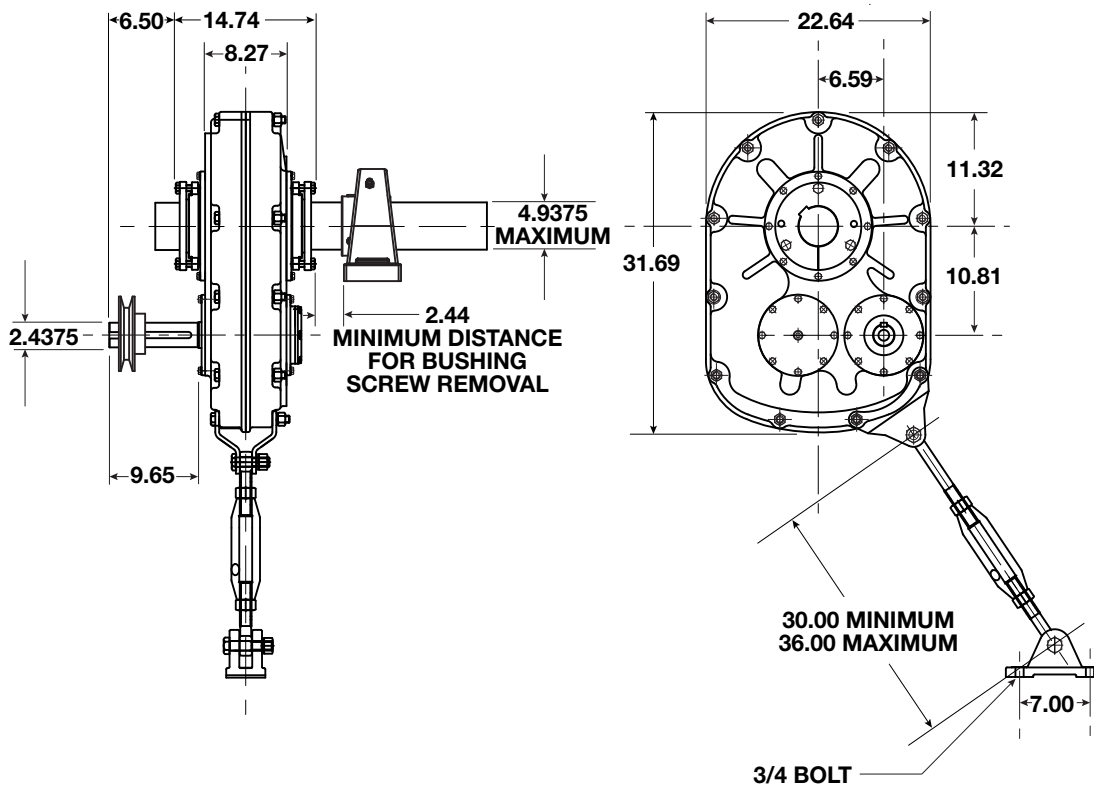




# VXT9 XD Dimensions

All dimensions listed in inches



## Output Hub Tapered Bushings (Other bushing sizes available by special order)

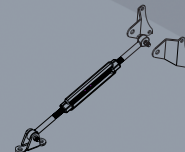
Bushing Kit Number (bore diameter)	Shaft Keyseat Required (inches)	Weight (lbs)
XBK9 3-7/16*	7/8 x 7/16 x 12-15/16	36.0
XBK9 3-15/16*	1 x 1/2 x 12-15/16	32.4
XBK9 4-7/16	1 x 1/2 x 12-15/16	27.0
XBK9 4-15/16	1-1/4 x 5/8 x 13	22.0

\*Check the driven shaft and key for adequate load capacity.

## XD Style Speed Reducer (AGMA Size 415)

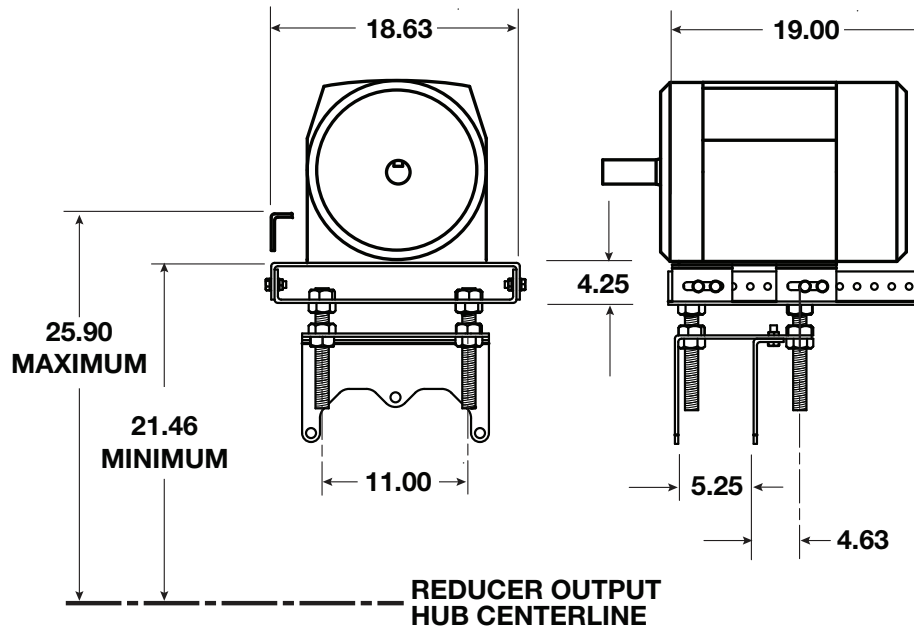
Reducer Unit	Exact Ratio	Maximum Output RPM	Weight (lbs)
VXT915 XD	15.12:1	120	732.0
VXT925 XD	25.66:1	75	732.0

## Included Torque Arm



Torque Arm Kit Number	Weight (lbs)
9TA	55.0

# VXT9 XD Accessories



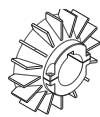
Motor Mount Kit Number	NEMA Motor Frame	Weight (lbs)
9MMA	213T-365T	120.0

V-Belt Center Distance for NEMA Frame Motors						
	210	250	280	320	360	400
Minimum	38.0	39.0	39.8	40.7	41.7	42.8
Maximum	43.0	44.0	44.7	45.7	46.7	47.7



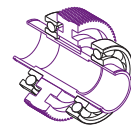
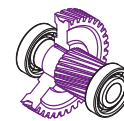
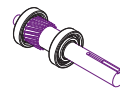
**Backstop**

9BKS



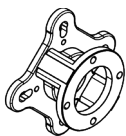
**Cooling Fan Kit**

9CFK



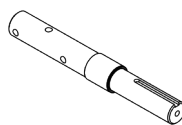
**Component Replacement Repair Kit**

9RK



**Screw Conveyor Flange**

Not Available

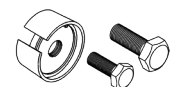


**Screw Conveyor Drive Shaft**

Not Available

**Output Shaft Diameter Options (in)**

Not Available



**Screw Conveyor Shaft Removal Wedge**

Not Available

